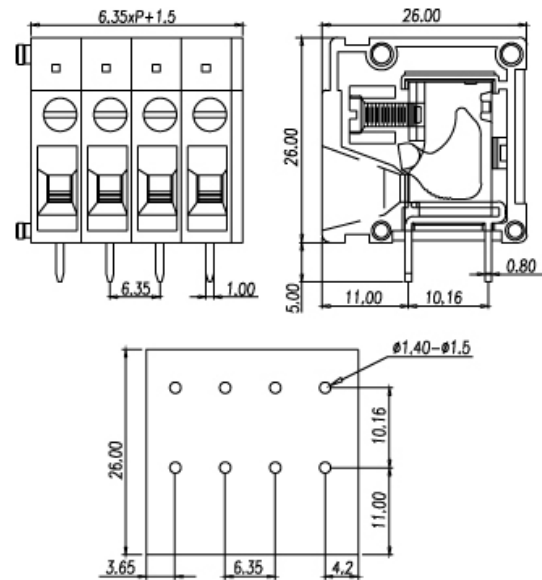
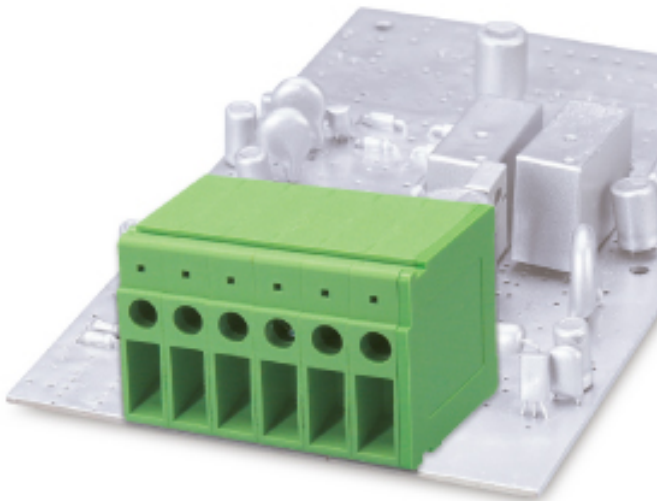


# Front entry type terminal blocks / DT-23 series



## DT-2300



**Pitch: 6.35mm**

Approval		
Technical Data	UL	IEC
Rated voltage	300V	450V
Rated current	33A	24A
Wire range	2.5mm <sup>2</sup>	
Solid wire (AWG)	22~10	
Stranded wire (AWG/mm <sup>2</sup> )	22~10	
Rated surge voltage (UL/IEC/Max.)	1.6 / 2.5 / 4 KV	
Torque (Lb-in)	4.5	
Screw	M3	
Wire strip length	10~11mm	
Pole	Cat. No.	
02	DT-2300-02P	
:	:	
:	:	
16	DT-2300-16P	

TEL: +886-2-2908-0614

FAX: +886-2-2908-8549

E-mail: [infor@dinkle.com.tw](mailto:infor@dinkle.com.tw)