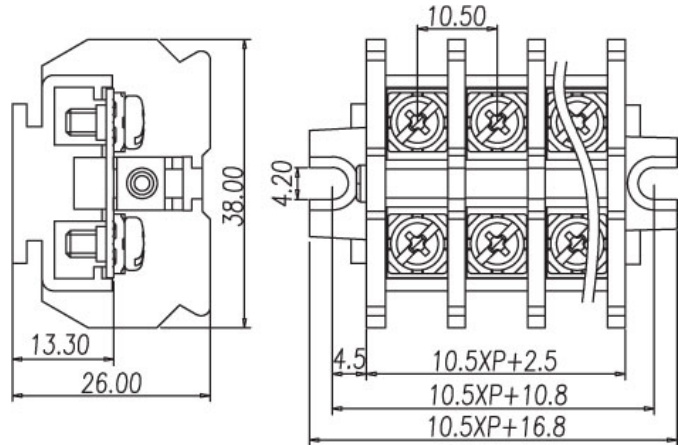
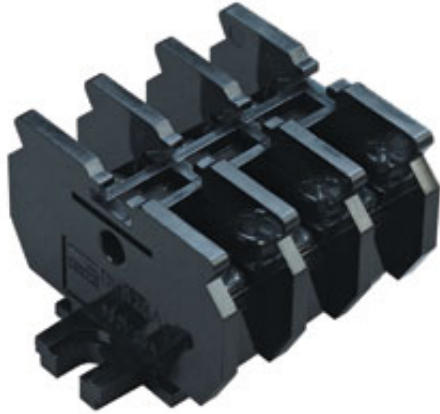


Panel Mounting Design / DKB-XXP series



DKB20-XXP



Pitch: 10.5mm

Approval	UL		FW2
Technical Data	UL		IEC
Rated Voltage	600V		
Rated Current	20A		
Applicable Wire (AWG)		22~12	
Torque (Lb-in)		7.1	
Screw		M3.5	
Housing Material		PC	

TEL: +886-2-2908-0614

FAX: +886-2-2908-8549

E-mail: infor@dinkle.com.tw